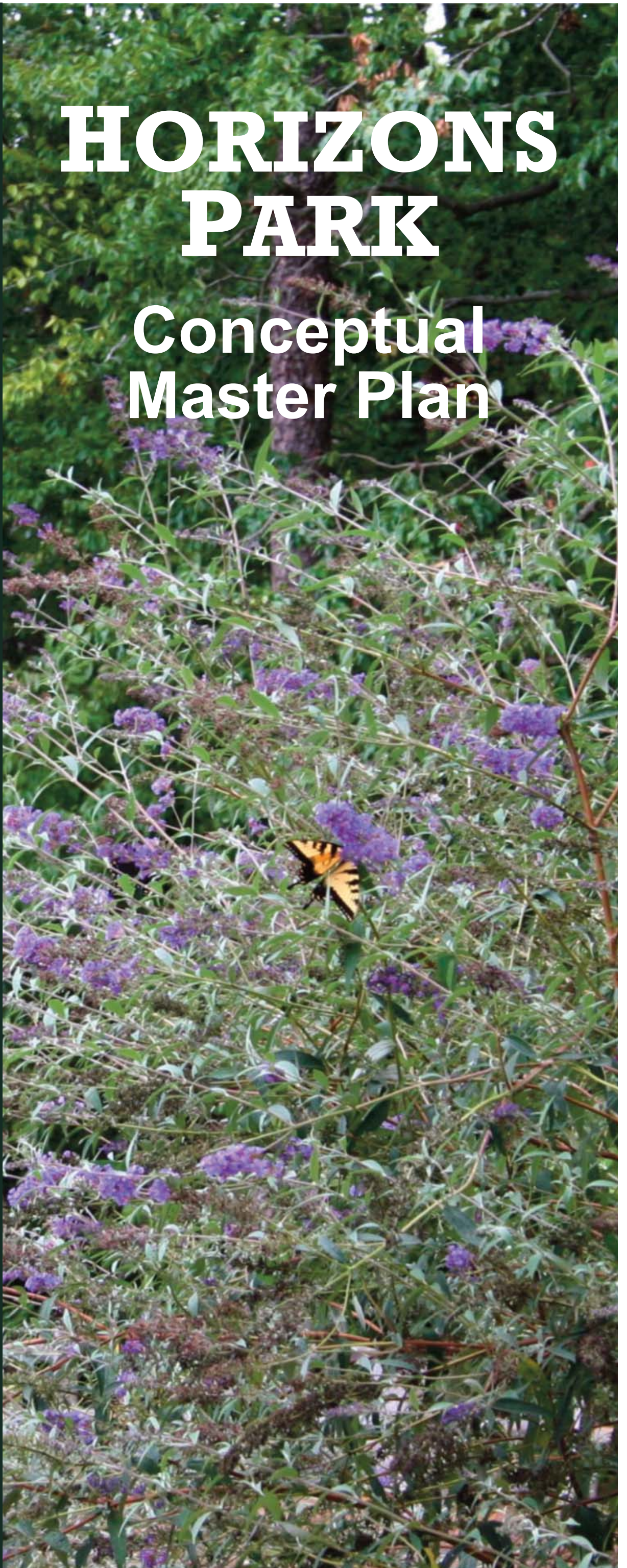


# **HORIZONS PARK**

## **Conceptual Master Plan**







# **HORIZONS PARK**

## **Conceptual Master Plan**



**Parks & Recreation**  
**Forsyth County, North Carolina**

**City-County**  
**Planning**  
**BOARD**  
FORSYTH COUNTY  
& WINSTON-SALEM,  
NORTH CAROLINA

**Publication Date: September 2012**



# TABLE OF CONTENTS

Introduction.....	1
Planning Process.....	1
Description of Horizons Park.....	1
History.....	4
Inventory of Existing Facilities.....	4
Citizen Participation.....	4
Site Inventory and Analysis.....	6
Land Use Suggestions.....	8
 Appendix: Survey Results.....	 10
1. Are you currently a resident of Forsyth County?.....	10
2. How often have you visited Horizons Park in the last 12 months?.....	10
3. What existing amenities do you use at Horizons Park?.....	10
4. Please rank the priority for use of the following facilities.....	11
5. What is your favorite feature of Horizons Park?.....	11
6. In your opinion, what do you think is missing from Horizons Park?.....	12
7. How did you first learn about Horizons Park?.....	13
8. What new or additional amenities or facilities would you like to see added at the Park?.....	14
9. Please rank the priority for use of the following outdoor/family facilities or amenities..	14
10. Please rank the priority for use of the following picnic areas/public events facilities or amenities.....	15
11. Please rank the priority for use of the following fishing/gardens/other facilities or amenities.....	15
12. Are there any changes you would like to see made to Horizons Park's existing facilities?.....	16
13. Do you think the Park is well-maintained?.....	17
14. How would you rank Horizons Park on a scale of 1 to 10?.....	17
15. Would you be willing to pay for any new services through concession or user fees?.....	18
16. Gender?.....	18
17. Race?.....	18
18. Approximate age?.....	19
 Maps	
Park Boundary.....	v
Existing Conditions.....	2
Topography.....	3
Site Analysis.....	7
Proposed Areas.....	9
 Acknowledgments.....	 19





Happy Hounds Dog Park



Disc Golf Course



Mountain Bike Trails



Ball Field



Nature and Hiking Trails



Open Fields



Nature Preserve



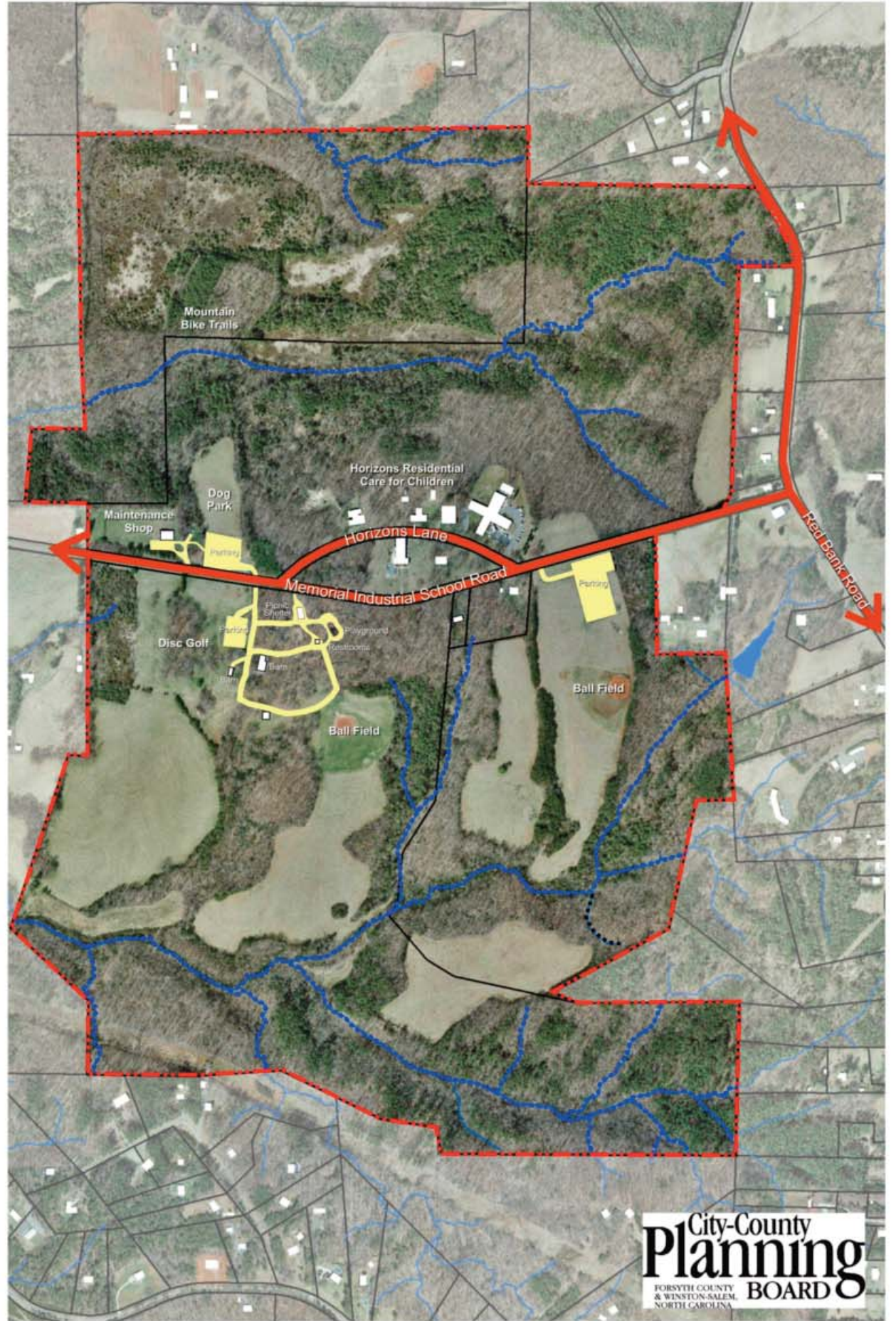
Picnic Shelter



Picnic Tables



Playground





## Introduction

The Forsyth County Parks and Recreation Department along with the City-County Planning Staff developed a Conceptual Master Plan for Horizons Park with participation by citizens and stakeholders. The Conceptual Master Plan is the first step in assessing the potential development of the park and in identifying the type of facilities it could support while preserving its distinctive physical qualities and environmental value.

The proposed improvements will offer a unique and rewarding experience for future park visitors. Both passive-recreation and active-recreation opportunities will further help citizens of Forsyth County to connect with the natural, outdoor environment of the park, and to reap the benefits of outdoor exercise in beautiful and natural surroundings. More detailed studies will be needed to determine the specific locations of proposed facilities, site design, estimated costs, and implementation phases.

## Planning Process

The Conceptual Master Plan is a feasibility study and proposal for the development and redevelopment of Horizons Park. The planning process as described in the following pages was conducted from February, 2012 to June, 2012. The Forsyth County Parks and Recreation Department and the City-County Planning Staff developed the following process for the development of the Conceptual Master Plan. The following documented process was conducted through collaborative effort between the two departments with input from citizens and stakeholders and potential users.

1. Preliminary meetings to discuss scope of the project
2. Horizons Park Master Plan Survey
3. Site Inventory and Analysis
4. Preliminary Conceptual Master Plan
5. First Public Input Session
6. Revisions to Conceptual Master Plan
7. Second Public Input Session
8. Draft Conceptual Master Plan

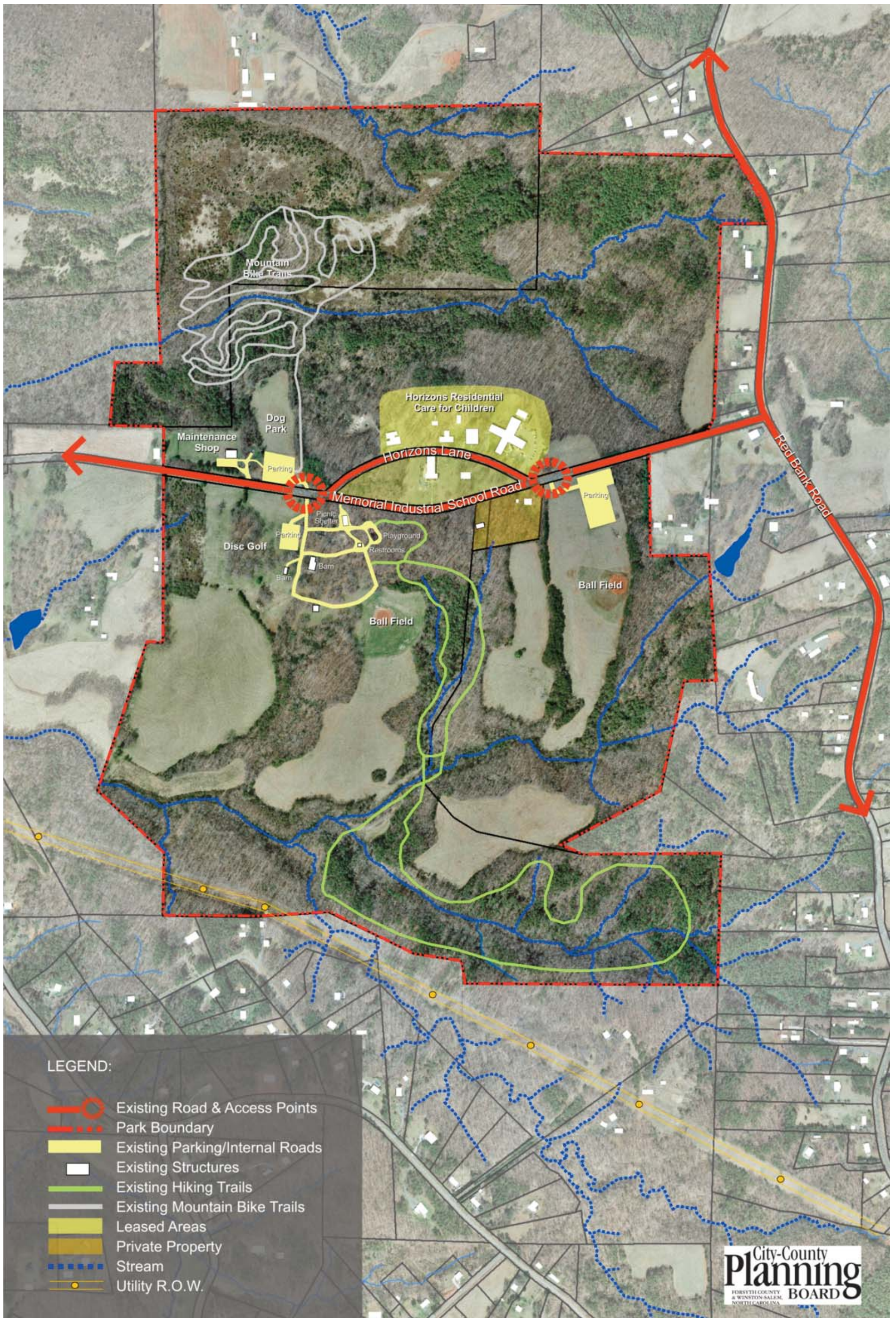
## Description of Horizons Park

Horizons Park is located in northern Forsyth County in the Piedmont area of North Carolina. Located in a rural setting within the Dan River Basin, the park is easily accessible from Winston-Salem via Highway U.S. 52 and Germanton Road, about a 20 minute drive from the downtown area (see **Boundary Map**).

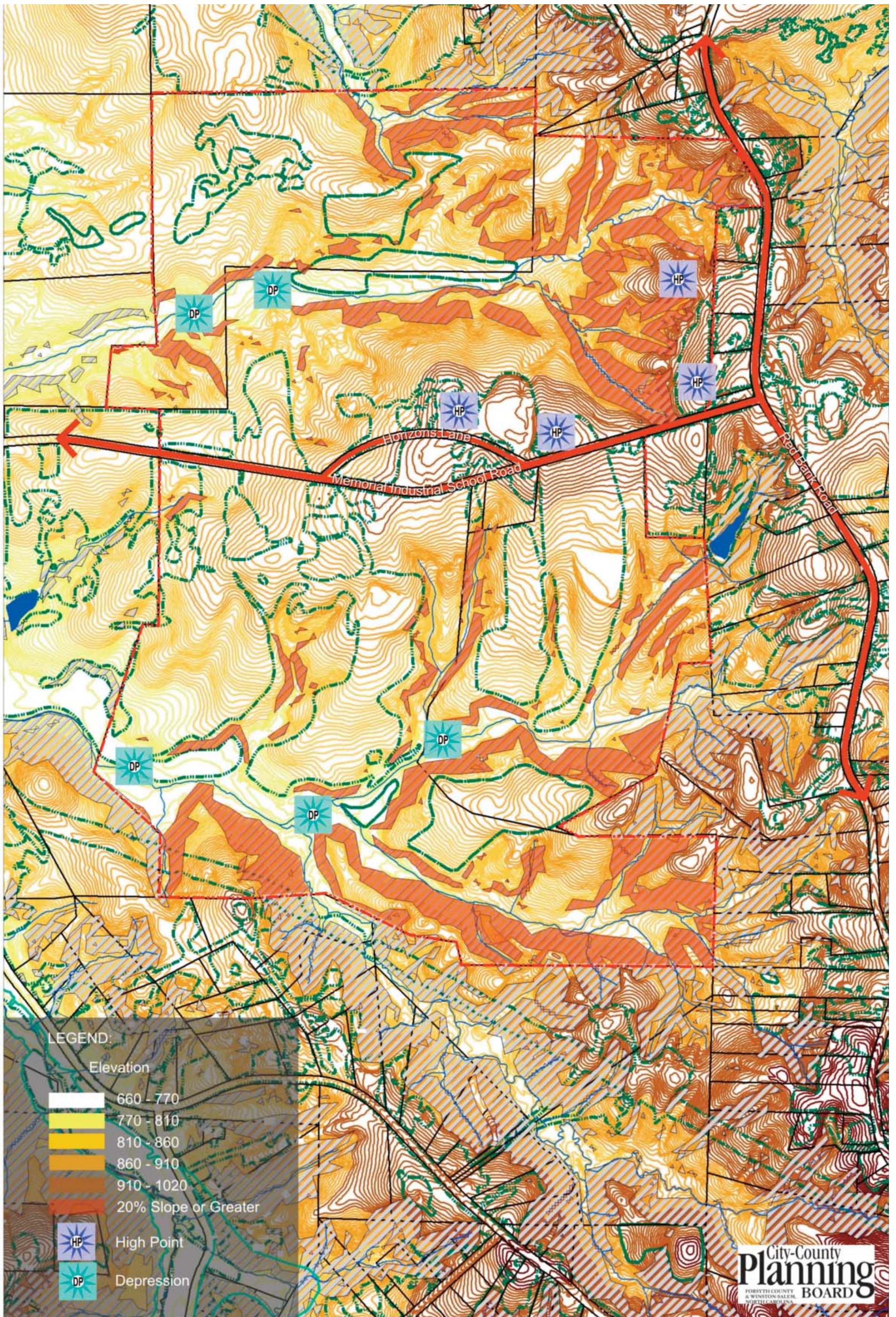
Horizons Park is made up of about 492 acres of rolling wooded hills and open fields and is crossed by a number of small streams located on the north and the south sides of Memorial Industrial School Road. This is the Forsyth Park System's second largest facility and has been developed in a manner that retains its appeal to families and nature lovers with many amenities and facilities for the public to enjoy. Over the years, many improvements and additions have been made to the park, including a dog park, disc golf course, playground, trail systems, a picnic shelter, and many more (see **Existing Conditions Map and Topography Map**).

The area surrounding Horizons Park is predominantly rural in character with large lots, limited development and significant amount of undeveloped land and areas of open space. Efforts to add additional facilities to the park should take into consideration the limited amount of development and the established rural character of the surrounding area.









# History

Horizons Park is located on a tract of land that was originally used for the Memorial Industrial School, an orphanage for underprivileged African-American children. The school opened at this location in 1928, thanks to W.N. Reynolds who donated 425 acres for the construction of a new campus. The children of R.J. Reynolds, N.A. Gray, and the Duke Foundation subsidized construction of the residential cottages. The complex includes the main building (school/auditorium), three residential cottages, and a 1950 superintendent's residence. The school's education included training in agricultural skills for boys and domestic skills for girls. The two standing barns, built around 1928 for dairy and horses, as well as a number of open fields in the park, are remnants of the farming operation that once took place on the property.

Memorial Industrial School closed in 1970 and was replaced in 1973 by Horizons Residential Care Center to serve children with severe intellectual disabilities. Forsyth County was able to acquire the property from Horizons Residential Care Center in late 1977 with money set aside from the 1974 park bond funds. The County leases a small part of the acreage to Horizons Residential Care Center and utilizes the remainder of the property for parkland.

The park opened to the public in the late 1970s with hiking trails, a picnic shelter, and surrounding recreational facilities. The disc golf course, the oldest permanent course in North Carolina, and the hiking trails attract a good number of users to the park. A maintenance building, expanded parking lots, and miles of mountain bike trails were later added. In 2007, an off-leash dog park was opened with donated funds.

Horizons Park is a wonderful place. A unique history and astounding beauty make it unlike any other park in Forsyth County.



# Inventory of Existing Facilities



The Horizons Happy Hounds Dog Park opened on Saturday, July 21, 2007. This dog area is designed for dogs to legally run off leash in a 2-acre fenced area. Part of the area is fenced for small dogs, another larger area for big dogs. The off-leash dog area offers water fountains for people, another fountain bowl for dogs, scattered benches, trash can receptacles and dog waste stations.

The park's disc golf course is a free 18-hole short and beautiful course designed by Tom Monroe which features DGA Mach III Deluxe baskets. Built before the advent of bevel-edged discs, the course is extremely short by modern standards at 3,673 feet. The holes range in length from 150 to 300 feet, with an average length of 230 feet. The course is perfect for beginners and children.

The course is home to the Horizons Park Classic, a PDGA event which routinely draws top professional players into the area. The Classic is in its 16th year, making it one of the oldest regular tournaments in the state.

One of the first shelters to be built in Forsyth County's parks is a large 120-person capacity shelter located in a beautiful wooded area. The shelter is equipped with a grill under a stone fireplace and is easily accessible for caterers and users. Restroom facilities are conveniently located nearby.



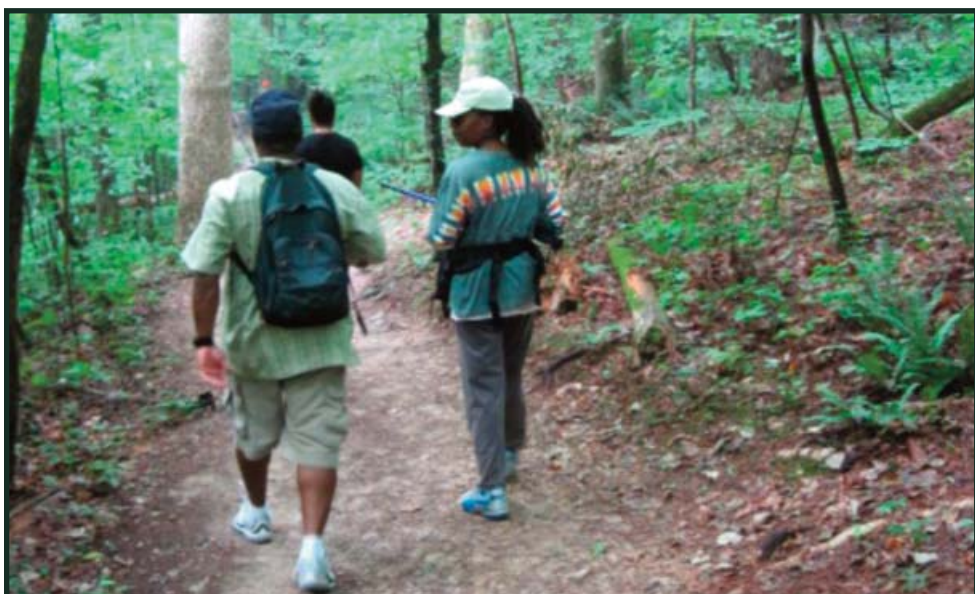
The mountain bike trail system at Horizons Park is for moderate to advanced skilled mountain bikers. The trail system is a single track with steep dropoffs, small and large gullies, and a number of bridges. The Perimeter Trail, marked "P", is approximately one mile long and for moderate bikers. The trail, marked "T", is the longer and more difficult, for riders with advanced ability.

The Horizons Park mountain bike trail system was built by the Winston-Salem/Forsyth County Bicycle Advisory Committee and is maintained by volunteers.



Two loop hiking trails are found in the park:

- Loop A, a 40-minute walk/hike trail, with a length of .7 miles.
- Loop B, a 2-hour walk/hike trail, with a length of 1.8 miles.



### Additional Facilities:

- Picnic Tables with Grills  
(8 single tables; 2 sites with 3 tables)
- Sand Volleyball Court
- Horseshoe Pit
- Softball Field
- Playground
- Restrooms
- Parking Lots
- Lot #1 - 59 spaces, 3 handicap
- Lot #2 - 123 spaces, 3 handicap
- Maintenance Facilities



## Citizen Participation

As part of the master plan procedure, opportunities for citizens to provide input were developed. A Master Plan Survey was designed and posted online for the design team to better understand the needs and desires of the community for Horizons Park. The survey was also mailed to adjacent property owners and copies made available at the park. Two public input meetings were held in June 2012 for citizens to bring their ideas about the future development of the park and answer questions related to the master plan process (see **Appendix for Survey Results**).

As a result of the survey and public input meetings an overall concept for the future development of the park became apparent. One of the guiding principles in developing the Conceptual Master Plan should be to preserve and enhance the park's natural areas and unique physical features. **Any expansion of current facilities or addition of new ones should be done in a manner which has minimal impact on the natural environment.**



# Site Inventory and Analysis

The planning team conducted an overview and analysis of the site's physical properties and environmental conditions. The results are described in the form of various maps and photographs (see **Site Analysis Map**).



Existing environmental features, such as creeks, steep slopes, and forest edges, have shaped the development and character of the site. Memorial Industrial School Road which generally runs east and west along a ridge line, physically and functionally divides the 400+ acre park into two approximately equal sections. The physical characteristics of the two sections vary suggesting a different type of activity for them.

## Northern Section

The section north of Memorial Industrial School Road, is mostly wooded with a mix of youthful pines and older hardwoods. A stream runs through the middle of this section westward towards Germanton Road to Buffalo Creek. Steeper hillsides in excess of 20% slopes are located in some parts of the valley along the Buffalo Creek tributary, predominantly closer to Red Bank Road. The northern portion of the park contains the dog park, maintenance facility, and biking trails. The Horizons Residential Care for Children is located in this section.

Currently this portion of the park consists of rough topography, wooded areas, and the Horizons Residential Care for Children facility, suggesting limiting future development in this area and leaving it in its natural state as much as possible. This section would be challenging to develop into more active public park facilities and thus better conserved as woodland with various trails for mountain bike, hiking, and equestrian use. It also serves as a buffer zone to the surrounding non-park properties.

## Southern Section

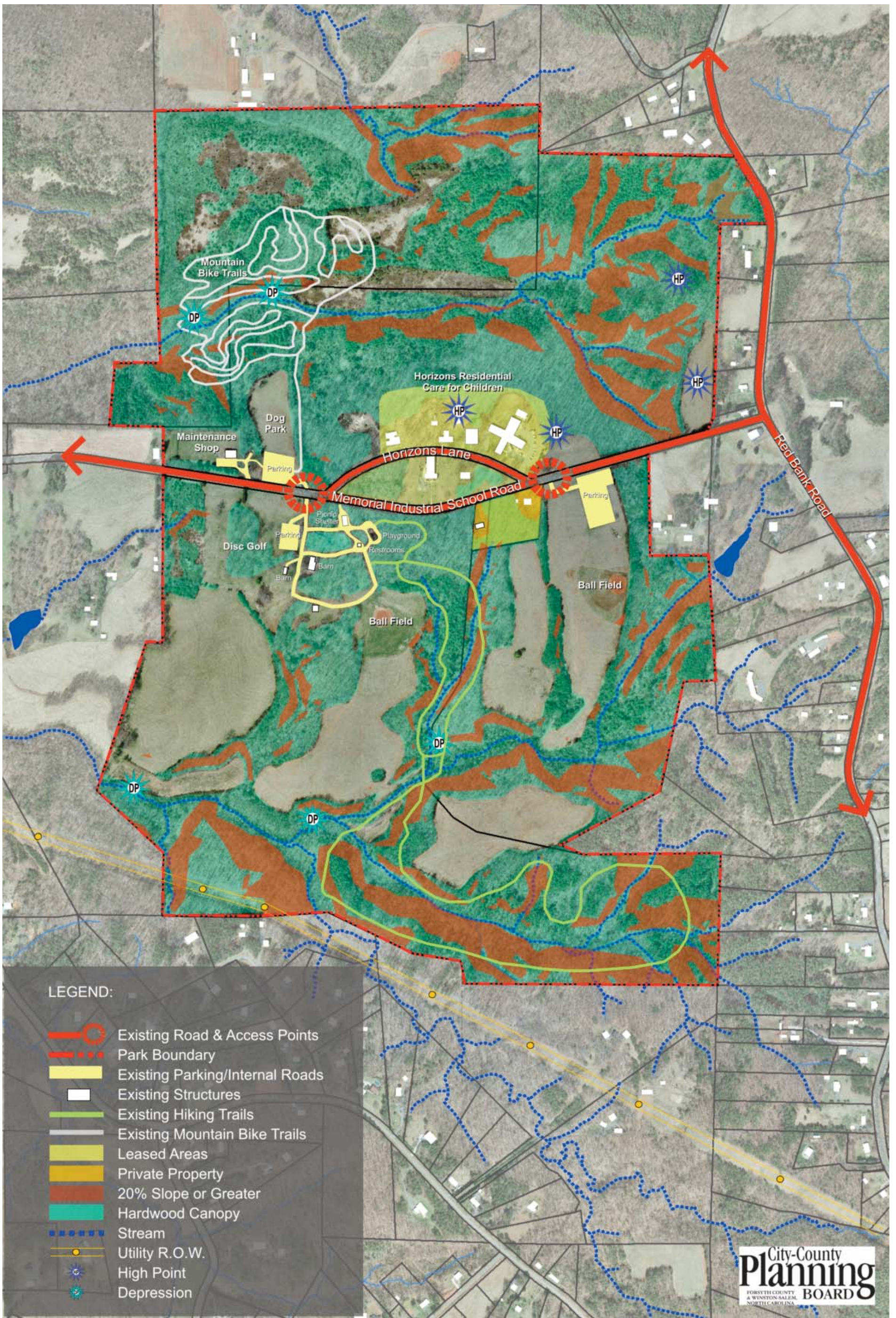
The portion south of Memorial Industrial School Road is where most of the park's activities are located. A mix of wooded areas and open fields, formerly used for farming, can be found here. Steeper hillsides in excess of 20% slopes can also be found here along Hill Creek and other tributaries to Buffalo Creek. Some portions of hiking trails in this area are characteristic of more mountainous terrain and are a favorite to local hikers.

The southern half of the site is generally in good, park-like condition. The areas cleared of vegetation are relatively level and with minimum grading could be suitable for additional development for a variety of active and passive park activities. Most of the wooded areas located here are being used for hiking trails and act as buffer zones for adjacent properties. Additional trails could be constructed to extend the larger loop and to connect future park activity areas. **A well-defined crosswalk for pedestrian access between the two portions of the site will need to be determined along Memorial Industrial School Road.**

## Visual Assessment

One of the most striking features of the park is varied topography and open vistas which provide excellent views within the park and outward towards the surrounding countryside. Extended views into the property from higher elevations can currently be seen from the disc golf course, the ball field and the unused parking area located on the east side of the picnic area. Horizons Park offers stunning views of nearby Sauratown Mountain and Hanging Rock State Park, particularly in the winter months when vegetation is less pronounced.





## Land Use Suggestions

The Conceptual Master Plan proposes maintaining the existing facilities in the park and adding new ones in keeping with the general principles of enhancing and preserving the natural environment. One of the limitations in developing new activities in the park is the lack of vehicular access to the areas located further away from Memorial Industrial School Road. **The potential of adding a new internal road with a wide shoulder for biking/walking and providing parking areas strategically located could open up a greater portion of the park for future users.**



The Site Analysis identified the two existing entrances to the southern portion of the park off Memorial Industrial School Road. These two entrances should be maintained and used to establish an internal loop road within the park to access areas that are not currently accessible by car and to serve as the foundation for the development of additional park amenities. New parking areas will be strategically and carefully located along the internal loop road for easy access to existing and new facilities. Open fields will provide the setting for a variety of new amenities to the park including additional shelters and play areas, areas for nature education, and a new championship disc golf course, all connected by the new road and/or by additional hiking trails. A proposed lake located at the lowest elevation on this portion of the park and a lake loop trail can also be added. The identified major areas of steep slopes and stream ravines will continue to provide a natural buffer to the surrounding properties as well as retaining the natural character of park preserve.



The northern portion of the park, as previously mentioned in the site analysis, is better left in its natural state. Biking, horseback riding or cross country running trails can be developed under the tree canopy here. A new large parking area for these users can be located off one of the main entrances and west of the Horizons Residential Care for Children facility. An improved dog park area with additional trees, fountains, benches and restrooms will complete development of this portion of the park (see **Proposed Areas Map**).

The general areas proposed are shown on the map and include:

- Renovated disc golf course area
- Sand/play area
- New shelter and play area
- Lake area
- Multi-use building area
- New championship disc golf course, shelter and play areas
- Additional areas for hiking/nature trails, mountain bike trails and horse/cross country trails.

No additional areas for park expansion have been identified in the Conceptual Master Plan. However, acquiring surrounding land as it becomes available would provide additional open space for trails, a lake, or other low intensity uses.



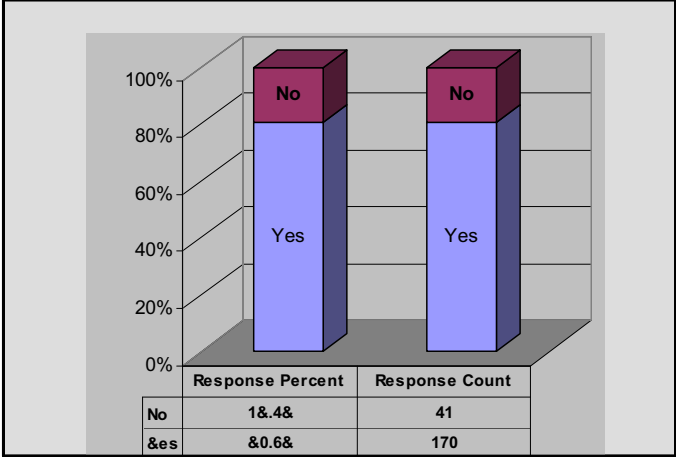


# Appendix: Survey Results

## Horizons Park Conceptual Master Plan

1. Are you currently a resident of Forsyth County?

Answer Options	Response Percent	Response Count
Yes	80.6%	170
No	19.4%	41
Other (please specify)		
Yadkin, Ashe, Guilford, Stokes, Surry, Davidson		

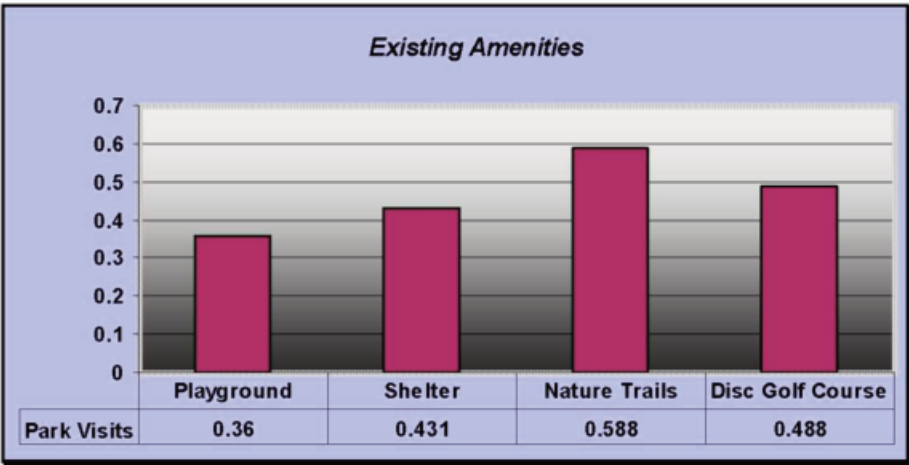


2. How often you visited Horizons Park in the last 12 months? (Check one)

Answer Options	Response Percent
Daily	23%
Weekly	29%
Monthly	30%
Infrequently	18%

3. What existing amenities do you use at Horizons Park?

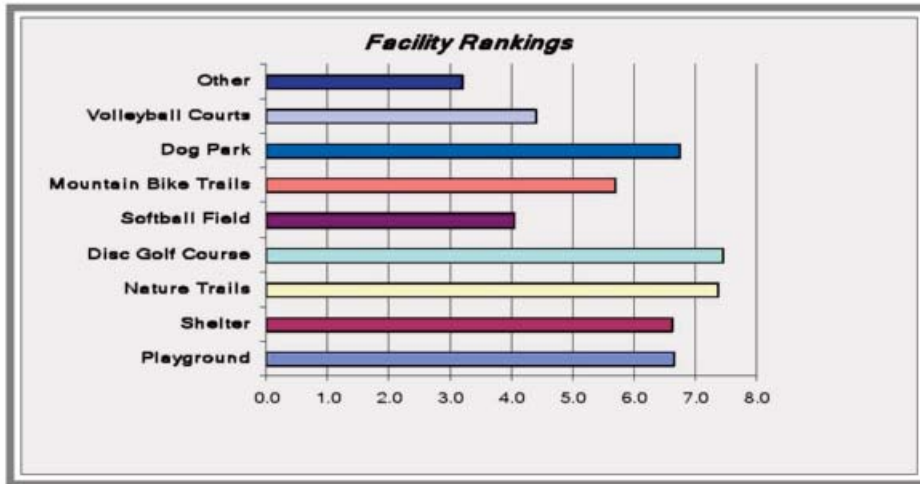
Answer Options	Response Percent	Response Count
Nature Trails	58.8%	124
Disc Golf Course	48.8%	103
Shelter	43.1%	91
Playground	36.0%	76
Dog Park	36.0%	76
Mountain Bike Trails	15.2%	32
Volleyball Courts	15.2%	32
Softball Field	11.8%	25
Other (Horseshoes, Fields, Picnic Tables)	7.6%	16





4. Please rank the priority for use of the following facilities.

Answer Options	1	2	3	4	5	6	7	8	9	Rating Average	Response Count
Nature Trails	32	34	19	17	4	2	4	0	1	7.40	113
Disc Golf Course	49	4	6	8	6	3	4	1	3	7.40	84
Dog Park	27	18	11	9	7	7	2	5	4	6.68	90
Shelter	12	24	28	11	7	5	3	5	1	6.64	96
Playground	22	22	16	10	7	6	5	3	4	6.63	95
Mountain Bike Trails	5	11	11	9	10	6	6	4	2	5.72	64
Volleyball Courts	0	3	7	12	11	14	12	9	4	4.36	72
Softball Field	2	3	5	2	12	9	8	12	5	4.10	58
Other	2	3	5	1	1	2	1	5	#	3.23	40



5. What is your favorite feature of Horizons Park?

Response Count: 197

Barn	21%	Play	18%
Facilities	21%	Wildlife	18%
Family	21%	Disc Golf Course	17%
Location	21%	Park	16%
Size	21%	Shelter	7%
Space	21%	Playground	4%
Trails	21%	Woods	4%
Cleanliness	18%	Beautiful	2%
Court	18%	Lots	2%
Layout	18%	Open Fields	2%
Loop	18%	Trees	2%
Natural Setting	18%	Walking	2%

## 6. In your opinion, what do you think is missing from Horizons Park?

- Not that many people know about it . . .it's a bit removed
- Water feature, lakes ponds
- More family setting and better things to do
- Seats at intervals on the trails
- Horizon needs more open lands and longer trails. As our county population increases this will become increasingly important.
- More places to sit and to picnic
- Restrooms open year-round.
- More trails.
- Shade and lower grass to pick up after dogs
- Haven't visited enough to provide an opinion.
- Maybe an observation deck/tower
- A water feature
- More mountain bike trails
- Fishing lake & better disc golf
- Field should be put to use
- More shade & trees in dog park
- Mowing a trail through the fields
- Marketing to the community
- Splash pad or spray playground
- Horseback riding/barns/riding lessons
- More shelters
- Updated playground equipment
- Outdoor stage
- More swings
- Longer trails...host a trail race
- Working water fountain
- Additional grill
- Disc golf could be expanded...basketball courts
- Restrooms/Vending Machines
- More play equipment with more creativity for the children
- Additional picnic tables
- Pool
- Pool
- A pond, addition of disc golf course
- Bigger playground, basketball court
- Another 18 holes of disc golf and a longer course as well. There is a whole lot of land not being used.
- Shade trees and cooling fountains for the dogs at the dog park.
- A bigger disc golf course
- Larger playground, swimming pool
- Better access to water & restrooms
- Another shelter, fishing
- Pool
- More restrooms
- Fishing
- Closer restrooms and a toddler sink
- Water at the shelter
- Longer trails
- More shelters and water access at shelters
- Music...fireworks on July 4th
- Flowers
- Projected landscape
- Mow dog park 2x/week
- A park attendant to enforce rules, maybe on a bike...especially dog park rules. A shoe brush to scrape dog feces off
- Shady area
- New water fountains, new playground equipment
- Lake/water
- Fishing/camping
- More attention to the nature aspect
- Nothing
- Lake or pond would a nice additional feature...I love playing disc golf in such a pretty setting.
- Access road to the back of the park to enjoy the entire area without having to walk a long distance.
- Organized events
- It's great as it is
- More trails
- Leash latch at restrooms
- Trails for walking/running
- Nothing
- Water fountains for dogs/pool in summer for dogs
- Some kind of water
- More trails, easy mountain bike trail as well as bike trails for entire family
- Dog park needs improvement...trees, shade
- Nothing, we like it the way it is.
- Golf Course
- Needs more playground area
- More swings and things for toddlers
- Horseback Riding Trails
- Nicer restrooms
- Mountain bike trails
- Not enough shelters – having only one is so limiting when planning an event, as someone may have already reserved the shelter, leaving only the picnic tables as the alternative, and those are first come, first served, so no guarantee that you will get them either.
- Better mountain bike trails that draw many more riders
- The playground does not have enough interesting things to keep children entertained. Also without any cover the equipment gets very hot. The metal bridge is dangerous for small children who may take off their shoes to slide because their toes can get caught in the cracks.
- Swimming pool
- Bocce courts
- Another disc golf course with all the un-used land I see out there every time I go.
- Labeling of trees, flowers
- More places to sit out in natural areas and along trails
- Championship Level Disc Golf Course
- Another disc golf course.
- a lot more quality single track mountain biking trails
- Better playground
- WATER
- I don't know
- A longer disc golf course.
- A longer, better second disc golf course
- I would like to have 2 disc golf courses to play. I really like the one that is there, and I hope it doesn't change, but I would like to see another one come to Horizon
- More nature trails and a water feature (lake or pond)
- Better maintenance of nature trails
- A longer disc golf course
- Better disc golf course
- Another disc golf course
- More seating at the dog park and lighting (stadium lights would be nice!)
- Additional disc golf holes/ updated disc golf course
- Fishing and a pro disc golf course
- An even better disc golf course
- Another disc golf course utilizing the beautiful rolling hills and woods behind the current disc golf area (behind holes 11 and 12.)
- We need a larger longer course. The park has many undeveloped acres.
- A Wooded Disc Golf Course
- A pro style disc golf course with multiple pin placements with long and short tees
- Another BIGGER Disc Golf course...you have the room
- Another 18 hole disc golf course

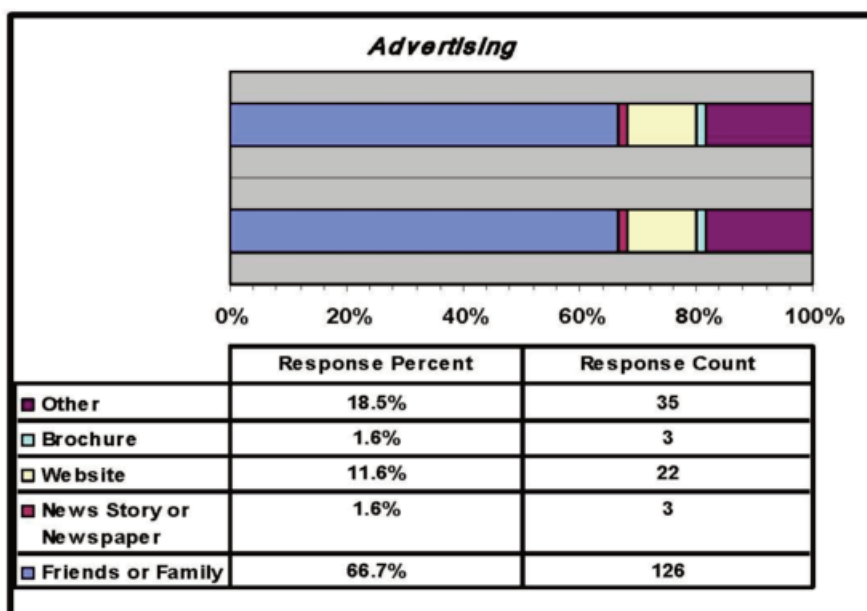
- A championship level disc golf course. Horizons is too small/short and not very challenging.
- Second disc golf course
- A more challenging disc golf course
- More disc golf
- A Championship level disc golf course.
- Specifically, the disc golf course needs flat benches at every tee pad location. Another disc golf course
- A professional quality disc golf course. Something worthy of the better class players from around the South to travel to play.
- A world class course like those of Charlotte and Raleigh. Horizons course is LAME.
- A full length disc golf course.
- Another disc golf course
- A bigger disc golf park.
- A longer disc golf course.
- A lot of space out there for another disc golf park
- An advanced disc golf course
- Bigger better disc golf course. Alternate disc golf course. Lots of space not utilized.
- A championship (probably 7500ft+) disc golf course.
- Expand the disc golf course. Course selection is limited in Winston and this is a fast growing sport. Let's take advantage!
- A swimming pool
- More drinking fountains maybe a couple in the golf area
- A championship disc golf course
- A longer walking trail, if possible would be nice – 5 mi?
- Nothing
- Shade in dog park
- Championship disc golf course
- A championship caliber disc golf course.
- The open fields offer little recreational use for

people or quality habitat for birds and other wildlife. With so much open space, I would like to see a development plan that includes restoring or maintaining some of these open area in native grass and wildflower habitat with science-based mowing and other care. Forsyth lacks grassland habitat, and Horizons provides an excellent opportunity to attract such species as meadowlarks, bobolinks, wild turkey, grasshopper sparrows as is being done at Tanglewood. I have never seen a meadowlark on this cultivated grass. Also, the nature trails provide an educational opportunity with interpretive signage. I think Forsyth Audubon could offer some advice here, as it does at Tanglewood.

- Land Protection from encroaching development and forest removal. Silence (leaf blowers are not needed in May!)
- More utilization of the property. The FIRST disc golf course in North Carolina was built here and it is the ONLY ONE in Forsyth County. WHY???
- A championship caliber disc golf course
- An advanced addition to the disc golf course.
- An improved disc golf course utilizing some of the massive acreage. But PLEASE leave the existing course!!
- More disc golf holes....in the woods around it.
- Fishing pond
- An updated, longer Disc Golf 18 hole course
- Championship level Disc Golf Course
- More disc golf! There should be a longer, tougher course. It would bring people in from all over the state!
- A championship disc golf course and community garden.
- An amphitheatre
- Need more trails, would also like to see one more dog water fountain in the large dog area

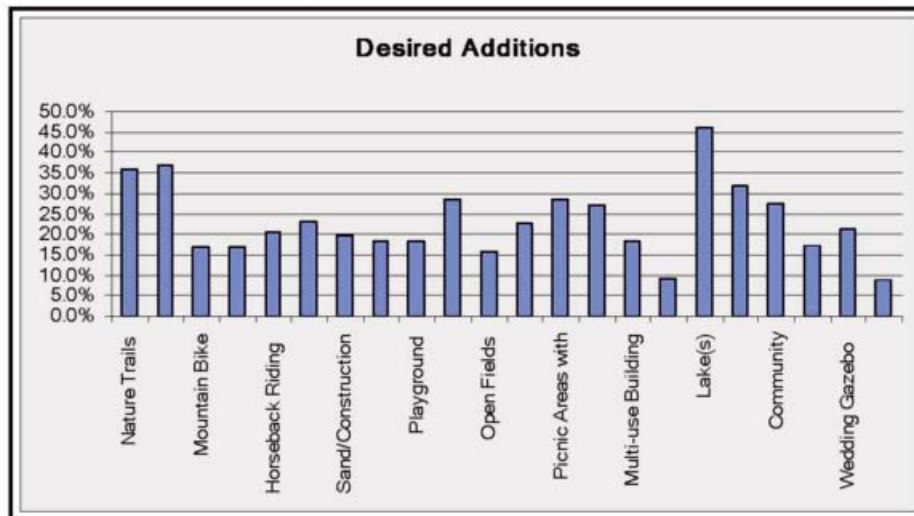
**7. How did you first learn about Horizons Park? (Check one)**

Answer Options	Response Percent	Response Count
Friends and Family	66.7%	126
Other (please specify)	18.5%	35
Website	11.6%	22
News Story or Newspaper	1.6%	3
Brochure	1.6%	3



**8. What new or additional amenities or facilities would you like to see added at the Park?  
(Please check all that apply)**

Answer Options	Response Percent	Response Count
Lake(s)	46.1%	94
Championship Disc Golf Course	36.8%	75
Nature Trails	35.8%	73
Lake Loop Trails	31.9%	65
Viewing Tower Overlook	28.4%	58
Picnic Areas with Outdoor Grills	28.4%	58
Community Gardens	27.5%	56
Small Amphitheater	27.0%	55
Bird Watching	23.0%	47
Picnic Shelters	22.5%	46
Wedding Gazebo	21.1%	43
Horseback Riding	20.6%	42
Sand/Construction Play Area	19.6%	40
Volleyball and Horseshoe Pits	18.1%	37
Playground	18.1%	37
Multi-use Building	18.1%	37
Demonstration Gardens	17.2%	35
Mountain Bike Trails	16.7%	34
Cross Country Trails	16.7%	34
Open Fields	15.7%	32
Auto Shows	9.3%	19
Other (please specify)	8.8%	18



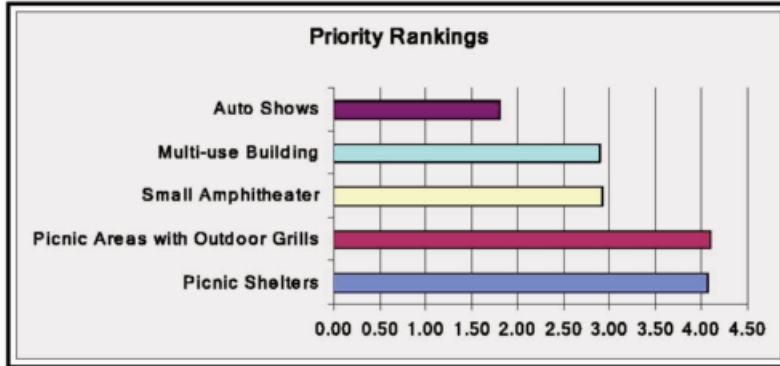
**9. Please rank the priority for use of the following outdoor/family facilities or amenities  
(1 being most used/important, 2 being next, etc.):**

Answer Options	1	2	3	4	5	6	7	8	9	10	11	Rating Average	Response Count
Nature Trails	66	31	13	9	5	2	5	1	2	2	1	9.16	106
Championship Disc Golf Course	35	4	2	1	0	4	5	5	2	2	8	8.88	99
Horseback Riding	9	9	8	4	6	9	6	6	9	10	15	5.55	91
Viewing Tower Overlook	2	7	13	13	9	10	9	4	6	9	5	6.18	87
Playground	12	14	11	13	6	8	4	5	6	2	5	7.35	86
Open Fields	7	5	11	9	15	4	4	6	6	3	10	6.31	80
Bird Watching	2	8	13	12	4	7	6	4	7	12	3	6.14	78
Cross Country Trails	8	15	7	5	9	8	6	7	5	5	2	6.97	77
Mountain Bike Trails	6	12	11	6	8	5	11	5	6	4	3	6.79	77
Volleyball and Horseshoe Pits	1	6	14	8	12	6	7	7	6	7	2	6.29	76
Sand/Construction Play Area	2	9	10	6	4	6	8	13	8	5	4	5.92	75



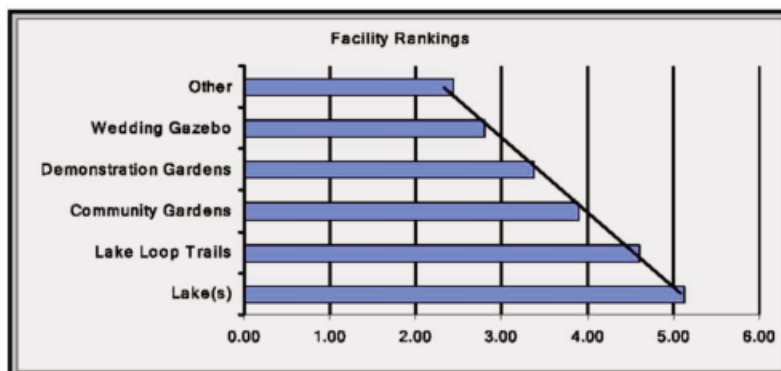
10. Please rank the priority for use of the following picnic areas/public events facilities or amenities (1 being most used/important, 2 being next, etc.):

Answer Options	1	2	3	4	5	Rating Average	Response Count	
Picnic Areas with Outdoor Grills	50	34	10	6	6	4.09	106	
Picnic Shelters	45	36	8	5	7	4.06	101	
Small Amphitheater	6	14	45	21	6	2.92	92	
Multi-use Building	10	15	22	37	4	2.89	88	
Auto Shows	7	5	6	6	51	1.81	75	
Answered Question								129



11. Please rank the priority for use of the following fishing/gardens/other facilities or amenities (1 being most used/important, 2 being next, etc.):

Answer Options	1	2	3	4	5	6	Rating Average	Response Count
Lake(s)	63	23	13	6	3	4	5.12	112
Lake Loop Trails	26	42	12	10	11	0	4.61	101
Community Gardens	10	14	37	20	6	4	3.89	91
Wedding Gazebo	6	13	9	10	35	18	2.80	91
Demonstration Gardens	6	7	16	34	13	3	3.37	79
Other	9	2	5	2	5	31	2.43	54

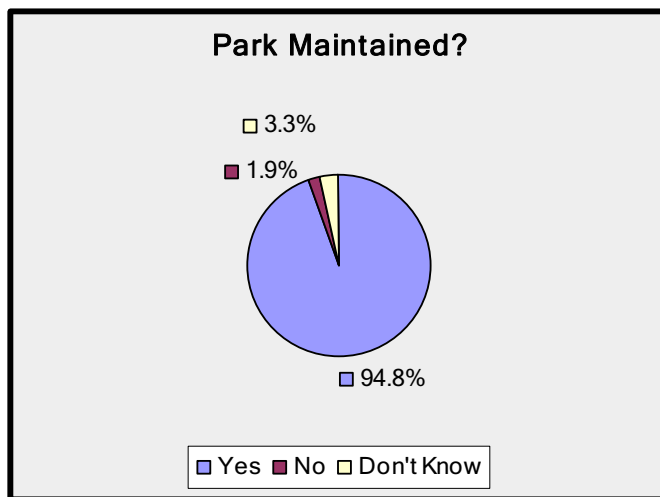


## 12. Are there any changes you would like to see made to Horizons Park's existing facilities?

- I've only been there 3-4 times and it seemed well-kept.
- Modernization.
- I would like to see more family oriented things to do. There are enough parks with Golf Courses, Bike Trails and Trails you have to go all the way to Tanglewood to enjoy a family outing with something to do.
- As a representative of Visit Winston-Salem, we'd like to see the usage of the park increase for various sporting events/competitions, such as Orienteering, Mountain Biking and Disc Golf. We also have the opportunity to host Archery events but understand that at this time, we are unable to do so with the current rules in place regarding archery bows.
- Yes, more benches and picnic tables. Thank you.
- If the county included more well-landscaped areas plus a wedding gazebo/restored or new event barn, native plant gardens, etc., it may be able to market it as a wedding location and have the park itself contribute to its upkeep.
- Do not know enough to provide comment.
- Upgrade hiking trail bridges
- Do a better job controlling yellow jackets and wasps around the grills/shelters
- Restrooms open later in the spring & fall
- Restrooms should be open year round
- Shade & water feature for the dog park
- A splash playground would be a great feature for families to enjoy during the summer.
- Would like an equestrian center like Tanglewood. More area for dog park
- Additional shelters
- Longer trails 3.1 miles preferably
- Bathrooms could use an update. More trails
- New restrooms
- Trail expansion
- Limit number of dog's that an individual can bring in
- Updated restrooms, baby changing table/hands free devices
- Restrooms open year round, all dogs should be required to use dog park
- Mow some of the perimeters of the open fields
- Make trails longer
- Please mow the grass in the fields
- Restroom at dog park and more amenities at dog park
- Keep restrooms open all year
- Please don't make major changes to trails
- Playground area really needs to be enlarged
- Additional activities for toddlers. The only thing for them to do is swing.
- Would like a lake and lake loop like Hobby Park.
- Paved or cleared natural trail
- Larger Restrooms w/better ventilation
- More and better mountain bike trails
- The bathrooms should not be locked while the park is open for business. I took my grandchildren and then had to leave in only a few minutes because the restroom was locked.
- Would like to see this park publicized more
- New fountains and nicer restrooms
- Better maintenance of trails, real maps with real trail distances
- More places to sit in natural areas
- Add a championship disc golf course. That's all it needs. There are other amenities throughout W-S area for the other activities. Disc golf courses are "nature trails with a purpose"...
- More quality single track mountain biking trails
- Larger playground and better disc golf course
- NO.
- Add some length to the current course
- Better maintenance of the fields and trails
- Better maintenance of nature trails
- No
- Water fountain on the disc golf course.
- Update the disc golf course with multiple baskets to account for the increase in disc technology
- Update and improve the disc golf course
- Additional, and more challenging, disc golf course to supplement the existing, historic course.
- Nice place. Old park, just update the original or make a longer course please.
- No
- Pro style disc golf course make a nice long course and keep the short one
- Championship Disc Golf course please...This sport is rapidly expanding and you need to grow with it
- Replace tee pads at the disc golf course.
- Again, add benches to each tee pad and enlarge concrete tee pads to 4'x8' on the existing disc golf course.
- More benches at tee pads
- A better disc golf course. That would include longer fairways, more elevation, tighter woods with dog legs and better signs and benches.
- Possibly extend the current disc golf course
- No
- No
- A more advanced disc golf course added.
- Bigger playground. See saws, merry go rounds, etc
- A way longer, more challenging disc golf course.
- I think it's a real nice park a fishing area would be cool with a trail around the lake
- Spread out the disc golf course to make safer.
- Just more trails
- More reliably unlocked bathrooms
- See Question 6 response
- More land and green space /woods. There is no need for additional facilities or amenities
- Disc golf. Sorry - seems like a no brainer - check Mecklenburg County - the officials there seem to have a good idea - they have MANY courses there!
- Upgrade disc golf
- The existing facilities are top notch! Better more updated Parking/lighting
- N/A
- More disc golf!
- N/A
- Add a leash latch for dogs at the public restrooms!!
- Would like to see golf course expanded with all the existing room
- More Waste Receptacles & vending
- Extra benches or picnic tables
- Restrooms
- Make it more handicap accessible...hard to push wheel chair through park
- Make the tee pads and holes longer on disc golf course
- Larger playground, learning activities for children
- Bath room closer to disc golf course or hopefully courses.
- Dog Park - Shade trees - cooling fountains for dogs
- What is unique to Horizons is that it is not over developed.
- Horizon's is a short drive but feels like you are really out in nature.
- I believe the focus should be on trails that allow you to enjoy the nature.
- Closer parking for handicapped
- More Parking close to shelter at least for the handicapped
- Fishing
- Restrooms opened and cleaned daily
- Another shelter addition. Four different groups tried to come by and use ours
- Cleaner smelling restrooms
- More drinking fountains and an updated playground
- Dog park could be mowed more frequently
- Stop leaf blowing in early morning
- Shade for the benches at the dog park and a place to hose off your dog if they get muddy
- More shady areas
- New water fountains,
- Playground equipment
- More & longer running and biking trails
- Fishing lake, camping
- More attention to mowing the open fields.
- Dog park needs more water options...maybe solar powered...more trees or shaded areas for hot days
- Please keep it free and accessible to all...this is in my opinion, the best park in Forsyth and provide free entertainment to all who gathers there

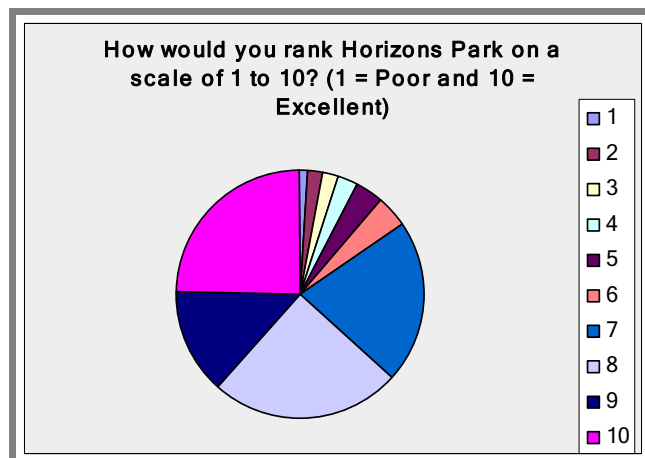
13. Do you think the Park is well-maintained? (Check one)

Answer Options	Response Percent	Response Count
Yes	94.8%	94.8%
No	1.9%	1.9%
Don't Know	3.3%	3.3%



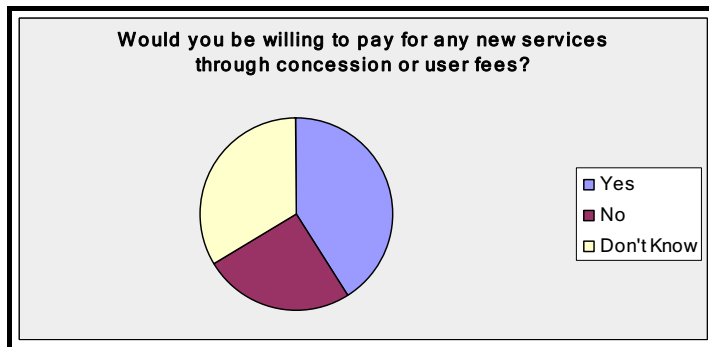
14. How would you rank Horizons Park on a scale of 1 to 10? (1 = Poor and 10 = Excellent)

Answer Options	Response Percent	Response Count
1	1.0%	2
2	2.0%	4
3	2.0%	4
4	2.9%	6
5	3.4%	7
6	4.4%	9
7	21.0%	43
8	24.9%	51
9	13.7%	28
10	24.9%	51



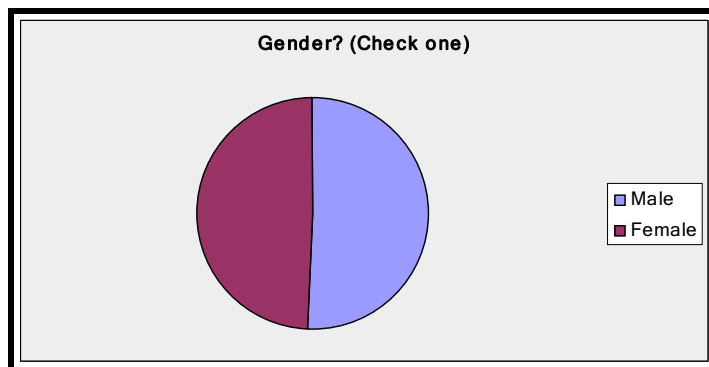
15. Would you be willing to pay for any new services through concession or user fees?

Answer Options	Response Percent	Response Count
Yes	40.9%	88
No	25.1%	54
Don't Know	34.0%	73



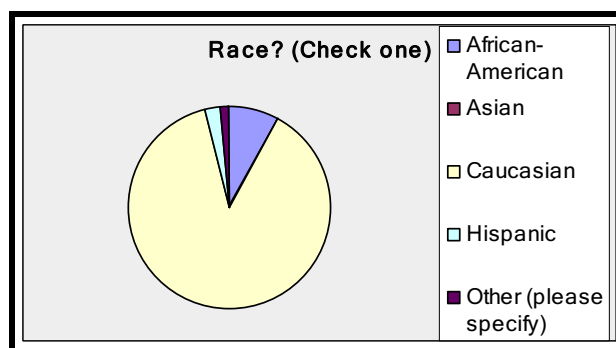
16. Gender? (Check one)

Answer Options	Response Percent	Response Count
Male	50.5%	108
Female	49.5%	106



17. Race? (Check one)

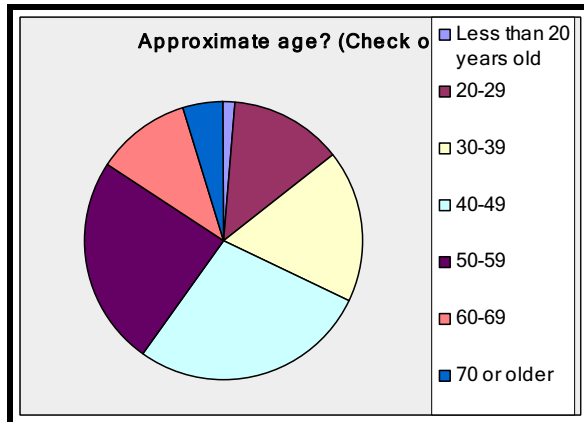
Answer Options	Response Percent	Response Count
African-American	8.1%	17
Asian	0.0%	0
Caucasian	88.2%	186
Hispanic	2.4%	5
Other (please specify)	1.4%	3





18. Approximate age? (Check one)

Answer Options	Response Percent	Response Count
Less than 20 years old	1.4%	3
20-29	13.1%	28
30-39	17.8%	38
40-49	27.6%	59
50-59	24.3%	52
60-69	11.2%	24
70 or older	4.7%	10



## Acknowledgments

### Forsyth County Board of Commissioners

**Richard V. Linville**  
Chairman  
**Debra Conrad**  
Vice Chair

**Walter Marshall**  
**David R. Plyer**  
**Gloria D. Whisenhunt**  
**Bill Whiteheart**  
**Everette Witherspoon**

**Dudley Watts Jr.**,  
County Manager  
**Damon L. Sanders-Pratt**  
Deputy County Manager

### Forsyth County Parks and Recreation Staff

**Mike Anderson**  
Director

**Christopher S. Weavil**  
Asst. Director Park Operations

**Rebecca S. Woodcock**  
Recreation Manager

### City-County Planning Staff

**A. Paul Norby, FAICP**  
Director of Planning

**Glenn Simmons, AICP, ASLA**  
Principal Planner  
**Donna Myers**  
Planning Graphics Coordinator  
*\*Project Leader*

**\*Marco Andrade**  
Project Planner



**Parks & Recreation  
Forsyth County, North Carolina**

For more information on the  
**HORIZONS PARK**  
Conceptual Master Plan

**Contact:**

**Forsyth County Parks and Recreation**

**Telephone: 336-703-2500**

**Fax: 336-727-2164**

**Website: [www.co.forsyth.nc.us/Parks](http://www.co.forsyth.nc.us/Parks)**