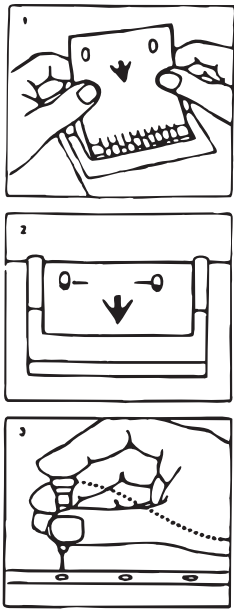


SAMPLE BALLOT

GENERAL ELECTION
 FORSYTH COUNTY, NORTH CAROLINA
 NOVEMBER 5, 2002

Voting Instructions



- Step 1** Using both hands, insert the ballot card all the way into the Vote Recorder.
- Step 2** Be sure the two slots in the end of your card fit down **over the two red pins**.
- Step 3** To vote, hold the voting instrument **straight up**. **Punch straight down** through the ballot card for the candidate of your choice. **Do not use pen or pencil.**
- Step 4** **Vote all pages.**
- Step 5** After voting, remove the ballot card from the Vote Recorder.
- Note:** If you make a mistake, return your ballot card and obtain another.

VOTER REGISTRATION DEADLINE, FRIDAY, OCTOBER 11, 2002

Mrs. Charles A. Cardwell, Jr.
 Mrs. Charles A. Cardwell, Jr., Chair
 Forsyth County Board of Elections

ALL PRECINCT VOTING PLACES OPEN 6:30 A.M. TO 7:30 P.M.

FORSYTH COUNTY BOARD OF ELECTIONS 727-2162

SPECIAL NOTICE

A VOTER IS LIMITED TO NO MORE THAN FIVE (5) MINUTES IN THE VOTING BOOTH WHEN OTHERS ARE WAITING TO VOTE. THE VOTER MAY MARK THIS SAMPLE BALLOT AND TAKE IT INTO THE VOTING BOOTH FOR REFERENCE PURPOSES. THIS SAMPLE BALLOT SHOULD NOT BE ALTERED OR MARKED BY ANYONE EXCEPT THE VOTER.

IMPORTANT - ALL VOTERS READ BEFORE VOTING PUNCH CARD BALLOT INSTRUCTIONS

- (a) To vote for all candidates of one party (a straight ticket), punch the card at the right of the party for whose candidates you wish to vote.
- (b) You may vote a split ticket by punching the card beside the party and then punching the card opposite the name of a candidate/s of a different party. In any multi-seat race where a straight party is punched, and you vote for candidates of another party, in order for your vote to count for any candidates for that office of the party for which you voted straight party, you must punch opposite the name of those candidates.
- (c) You may also vote a split ticket by not making a punch for the party, but by punching beside the name of each candidate for whom you wish to vote.
- (d) If you tear or deface or wrongly punch your ballot card, return it and get another.

A STRAIGHT PARTY PUNCH DOES NOT CAST A VOTE FOR NON-PARTISAN OFFICES OR FOR THE CONSTITUTIONAL AMENDMENT ON THE LAST TWO PAGES.

	DEMOCRAT	15	→
	REPUBLICAN	16	→
	LIBERTARIAN	17	→
UNITED STATES SENATE You May Vote for One Puedes votar para uno	ERSKINE B. BOWLES	DEMOCRAT	21 →
	ELIZABETH H. DOLE	REPUBLICAN	22 →
	SEAN HAUGH	LIBERTARIAN	23 →
	Write In		24 →
UNITED STATES CONGRESS - 5TH DISTRICT You May Vote for One Puedes votar para uno	DAVID CRAWFORD	DEMOCRAT	25 →
	RICHARD M. BURR	REPUBLICAN	26 →
UNITED STATES CONGRESS - 12TH DISTRICT You May Vote for One Puedes votar para uno	MEL WATT	DEMOCRAT	27 →
	JEFF KISH	REPUBLICAN	28 →
	CAREY HEAD	LIBERTARIAN	29 →
NC ASSOCIATE JUSTICE OF SUPREME COURT You May Vote for One Puedes votar para uno	BOB HUNTER	DEMOCRAT	41 →
	ROBERT F. (BOB) ORR	REPUBLICAN	42 →
NC ASSOCIATE JUSTICE OF SUPREME COURT You May Vote for One Puedes votar para uno	G. K. BUTTERFIELD	DEMOCRAT	43 →
	EDWARD THOMAS BRADY	REPUBLICAN	44 →
COURT OF APPEALS JUDGE You May Vote for One Puedes votar para uno	GEORGE R. BARRETT	DEMOCRAT	45 →
	RICK ELMORE	REPUBLICAN	46 →
COURT OF APPEALS JUDGE You May Vote for One Puedes votar para uno	HUGH BROWN CAMPBELL, JR.	DEMOCRAT	47 →
	ERIC LEVINSON	REPUBLICAN	48 →
COURT OF APPEALS JUDGE You May Vote for One Puedes votar para uno	MARTHA GEER	DEMOCRAT	49 →
	BILL CONSTANGY	REPUBLICAN	50 →
COURT OF APPEALS JUDGE You May Vote for One Puedes votar para uno	LORETTA C. BIGGS	DEMOCRAT	51 →
	SANFORD L. STEELMAN, JR.	REPUBLICAN	52 →
COURT OF APPEALS JUDGE You May Vote for One Puedes votar para uno	WANDA G. BRYANT	DEMOCRAT	53 →
	ANN MARIE CALABRIA	REPUBLICAN	54 →
DISTRICT ATTORNEY - 21ST DISTRICT You May Vote for One Puedes votar para uno	TOM KEITH	REPUBLICAN	55 →
STATE SENATE - 31ST DISTRICT You May Vote for One Puedes votar para uno	HAMILTON C. (HAM) HORTON, JR.	REPUBLICAN	60 →
	DONN LINTON	LIBERTARIAN	61 →
STATE SENATE - 32ND DISTRICT You May Vote for One Puedes votar para uno	LINDA GARROU	DEMOCRAT	62 →
STATE HOUSE - 66TH DISTRICT You May Vote for One Puedes votar para uno	WAYNE SEXTON	REPUBLICAN	78 →
STATE HOUSE-71ST DISTRICT You May Vote for One Puedes votar para uno	LARRY WOMBLE	DEMOCRAT	80 →
	MAC WEATHERMAN	REPUBLICAN	81 →
	LYNN HAGGERTY	LIBERTARIAN	82 →
STATE HOUSE-72ND DISTRICT You May Vote for One Puedes votar para uno	EARLINE W. PARMON	DEMOCRAT	83 →
	VERNON ROBINSON	REPUBLICAN	84 →
STATE HOUSE - 91ST DISTRICT You May Vote for One Puedes votar para uno	ROBERT W. MITCHELL	DEMOCRAT	85 →
	REX L. BAKER	REPUBLICAN	86 →

STATE HOUSE - 92ND DISTRICT You May Vote for One Puedes votar para uno	GEORGE M. HOLMES	REPUBLICAN	87 →
	ADAM WILSON	LIBERTARIAN	88 →
STATE HOUSE-93RD DISTRICT You May Vote for One Puedes votar para uno	BECKY JOHNSON	DEMOCRAT	90 →
	WILLIAM C. (BILL) MCGEE	REPUBLICAN	91 →
	KEVIN FORTNER	LIBERTARIAN	92 →
STATE HOUSE - 94TH DISTRICT You May Vote for One Puedes votar para uno	MICHAEL (MIKE) DECKER	REPUBLICAN	92 →
	ED TOPOLSKI	LIBERTARIAN	93 →
CLERK OF SUPERIOR COURT You May Vote for One Puedes votar para uno	TERRY L. HOLBROOK	REPUBLICAN	99 →
SHERIFF You May Vote for One Puedes votar para uno	JOHN POLITE	DEMOCRAT	101 →
	WILLIAM T. (BILL) SCHATZMAN	REPUBLICAN	102 →
COUNTY COMMISSIONER - AT LARGE You May Vote for One Puedes votar para uno	JOHN G. PALMER	DEMOCRAT	103 →
	DAVE PLYLER	REPUBLICAN	104 →
COUNTY COMMISSIONER - DISTRICT A You May Vote for Two Puedes votar para dos	BEAUFORT O. BAILEY	DEMOCRAT	106 →
	WALTER MARSHALL	DEMOCRAT	107 →
	JOHN DAVENPORT, JR.	REPUBLICAN	108 →
COUNTY COMMISSIONER - DISTRICT B You May Vote for One Puedes votar para uno	WILLIAM A. (BUD) HENDRIX	DEMOCRAT	109 →
	DEBRA CONRAD-SHRADER	REPUBLICAN	110 →
	RICHARD NORMAN	LIBERTARIAN	111 →
BOARD OF EDUCATION - AT LARGE You May Vote for Three Puedes votar para tres	ERIC ELLIOTT	DEMOCRAT	117 →
	A. L. (BUDDY) COLLINS	REPUBLICAN	118 →
	DONNY C. LAMBETH	REPUBLICAN	119 →
	LYNN S. THROWER	REPUBLICAN	120 →
BOARD OF EDUCATION - DISTRICT 1 You May Vote for Two Puedes votar para dos	GENEVA B. BROWN	DEMOCRAT	121 →
	VICTOR JOHNSON, JR.	DEMOCRAT	122 →
BOARD OF EDUCATION - DISTRICT 2 You May Vote for Four Puedes votar para cuatro	JANE D. GOINS	REPUBLICAN	126 →
	JEANNIE A. METCALF	REPUBLICAN	127 →
	MARILYN A. PARKER	REPUBLICAN	128 →
	JILL A. TACKABERY	REPUBLICAN	129 →
SUPERIOR COURT JUDGE- DISTRICT 21C You May Vote for One Puedes votar para uno	RON SPIVEY	Non-partisan	135 →
DISTRICT COURT JUDGE - 21ST DISTRICT You May Vote for One Puedes votar para uno	DENISE S. HARTSFIELD	Non-partisan	138 →
	DEAN RUTLEDGE	Non-partisan	139 →
DISTRICT COURT JUDGE - 21ST DISTRICT You May Vote for One Puedes votar para uno	JAMES A. DAVIS	Non-partisan	141 →
	LISA V. MENEFFEE	Non-partisan	142 →
SOIL AND WATER CONSERVATION DISTRICT SUPERVISOR You May Vote for Two Puedes votar para dos	MIKE BRAGG	Non-partisan	144 →
	WILLIAM W. LINVILLE	Non-partisan	145 →
	KERRY VENABLE	Non-partisan	146 →
	R. LEE WRIGHTS	Non-partisan	147 →
	Write In		148 →
Write In		149 →	

CONSTITUTIONAL AMENDMENT

Constitutional amendment making a technical correction to allow dedication and acceptance of property into the State Nature and Historic Preserve by the General Assembly by enactment of a bill rather than a joint resolution.

FOR 158 →
 AGAINST 159 →

FORSYTH COUNTY BOARD OF ELECTIONS

680 W. FOURTH ST., WINSTON-SALEM, NC 27101-2730
 Telephone 727-2162 • OFFICE HOURS: Monday - Friday 8:00 A.M. to 5:00 P.M.

"One-Stop" No Excuse Absentee Voting at the following locations:

Reynolda Manor Library
 2839 Fairlawn Drive, Winston-Salem, NC
OCT. 22, 2002 - NOV. 2, 2002
Mon. - Wed. Noon - 7:00 pm
Thurs. - Fri. - Noon - 5:00 pm
Sat. 10:00 am - 1:00 pm

WSSU (Anderson Center)
 800 Price Street, Winston-Salem, NC
OCT. 22, 2002 - NOV. 2, 2002
Mon. - Wed. Noon - 7:00 pm
Thurs. - Fri. - Noon - 5:00 pm
Sat. 10:00 am - 1:00 pm

Forsyth County Board of Elections
 680 W. Fourth St., Winston-Salem, NC
OCT. 17, 2002 - NOV. 1, 2002
8:00 am - 5:00 pm
NOV. 2, 2002
10:00 am - 1:00 pm

FORSYTH COUNTY BOARD OF ELECTIONS PRECINCTS AND DISTRICTS

PRECINCT	CONG	ST. SEN.	ST. HSE	SUP. CT.	COM	SCH
ARDMORE BAPTIST CHURCH 501 MILLER STREET	703	05	32	93	21A	B 2
ASHLEY ELEMENTARY SCHOOL 1647 E. 21ST STREET	301	12	32	71	21D	A 1
BEESONS CROSSROADS FIRE 1105 OLD SALEM ROAD	014	05	31	94	21C	B 2
BELEWS CREEK FIRE STA 8044 GOODWILL CHURCH RD	021	05	31	66	21C	B 2
BETHABARA MORAVIAN CH. 2100 BETHABARA ROAD	905	12	32	72	21B	B 2
BETHANIA MORAVIAN CHURCH 5545 MAIN STREET	101	12	32	72 94	21C	B 2
BROWNDUGLAS REC CTR 4725 INDIANA AVENUE	201	12	32	72	21D	A 1
BRUNSON ELEMENTARY 155 N HAWTHORNE ROAD	902	12	32	72	21B	A 1
CALVARY BAPTIST-BOY SCOUT HUT 5000 COUNTRY CLUB ROAD	807	05	31	93	21A	B 2
CARVER HIGH SCHOOL 3545 CARVER SCHOOL ROAD	305	12	32	72	21D	A 1
CASH ELEMENTARY SCHOOL 4700 OLD HOLLOW ROAD	063	05	31	94	21C	B 2
CLEMMONS CIVIC CENTER 2870 MIDDLEBROOK DRIVE	054	05	31	93	21A	B 2
CLEMMONS ELEMENTARY 6200 BINGHAM AVENUE	051	05	31	93	21A	B 2
CLEMMONS PRESBYTERIAN 3910 HIGHWAY 158	052	05	31	93	21A	B 2
COUNTRY CLUB FIRE STA 4700 COUNTRY CLUB	808	05	31	93	21A	B 2
COVENANT PRESBYTERIAN 3627 KONNOAK DRIVE	506	12	31	93	21B	A 2
EAST FORSYTH HIGH SCHOOL 2500 W MOUNTAIN STREET	082	12	32	71	21D	A 1
EAST WINSTON LIBRARY 1110 E 7TH STREET	404	12	32	71	21D	A 1
EASTON ELEMENTARY SCHOOL 734 E CLEMMONSVILLE	505	12	32	93 71	21B	A 1
FELLOWSHIP BAPTIST 1075 TEAGUE ROAD	042	12	31	93	21B	B 2
FIRST CHRISTIAN CHURCH 2320 COUNTRY CLUB ROAD	701	05	32	72 93	21A	B 2
FOREST PARK ELEMENTARY 2019 MILFORD STREET	502	12	32	71	21B	A 1
FORSYTH FRIENDS MEETING 800 JONESTOWN ROAD	123	05	31	93	21A	B 2
FORSYTH TECH CC-WOODRUFF CTR 4905 LANSING DRIVE	304	12	32	72	21D	A 1
FORSYTH TECH WEST CAMPUS 1300 BOLTON STREET	705	05	32	93	21A	B 2
FOURTEENTH STREET REC 2020 FOURTEENTH STREET	402	12	32	71	21D	A 1
FRIEDLAND MORAVIAN 2750 FRIEDLAND CHURCH RD	043	12	32	71 94	21B	B 2
GLENN HIGH SCHOOL 1600 UNION CROSS ROAD	011	05	31	94	21C	B 2
GOOD SHEPHERD MORAVIAN 1474 KERNER RD	068	05	31	94	21C	B 2
GREEK ORTHODOX CHURCH 435 KEATING DRIVE	707	05	32	93	21A	B 2
GRIFFITH FIRE STATION 5190 PETERS CREEK PW	122	05	31	72 93	21A	B 2
HANES COMMUNITY CENTER 610 COLISEUM DRIVE	903	12	32	72	21B	A 1
HANES/LOWRANCE MIDDLE SCHOOL 2900 INDIANA AVENUE	302	12	32	72	21D	A 1
HILL MIDDLE SCHOOL 2200 TRYON STREET	504	12	32	71	21B	A 1
HOLY FAMILY CATHOLIC CHURCH 4820 KINNAMON ROAD	055	05	31	92	21A	B 2
IBRAHIM ELEMENTARY 5036 OLD WALKERTOWN ROAD	083	12	32	71	21D	A 1
JEFFERSON MIDDLE SCHOOL 3500 SALLY KIRK ROAD	809	05	31	93	21C	B 2
JOEL/VETERANS COLISEUM 2825 UNIVERSITY PARKWAY	204	12	32	72	21D	A 1
KERNERSVILLE ELEMENTARY 512 W MOUNTAIN STREET	064	05	31	66	21C	B 2
KERNERSVILLE LIBRARY 130 E MOUNTAIN STREET	061	05	31	66	21C	B 2
KERNERSVILLE RECREATION 1391-C SOUTH PARK DRIVE	067	05	31	94	21C	B 2
KINGSWOOD UNITED METH 6940 UNIVERSITY PARKWAY	034	05	31	94	21C	B 2
LATHAM ELEMENTARY 986 HUTTON STREET	603	12	32	72	21B	B 1
LEAP ACADEMY AT KENNEDY 1000 N HIGHLAND AVENUE	403	12	32	71	21D	A 1
LEWISVILLE ELEMENTARY SCHOOL 6500 LUCY LANE	071	05	31	92	21A	B 2
LEWISVILLE LIBRARY 6497 SHALLOWFORD ROAD	075	05	31	92	21A	B 2
LITTLE CREEK RECREATION 610 FOXCROFT DRIVE	708	05	32	93	21A	B 2
MACEDONIA BAPTIST CHURCH 6816 DORAL DRIVE	092	05	31	91	21A	B 2
MARTIN LUTHER KING REC 2001 PITTSBURG AVENUE	203	12	32	72	21D	A 1
MEADOWLARK MIDDLE SCHOOL 301 MEADOWLARK DRIVE	074	05	31	93	21A	B 2
MESSIAH MORAVIAN CHURCH 1401 N PEACE HAVEN ROAD	805	05	31	93	21C	B 2

FORSYTH COUNTY BOARD OF ELECTIONS PRECINCTS AND DISTRICTS

PRECINCT	CONG	ST. SEN.	ST. HSE	SUP. CT.	COM	SCH
MILLER PARK RECREATION 400 LEISURE LANE	702	05	32	93	21A	B 2
MINERAL SPRINGS ELEM SCH 4527 OGBURN AVENUE	306	12	32	71	21D	A 1
MT TABOR HIGH SCHOOL 342 PETREE ROAD	906	05	31	94	21C	B 2
NEW HOPE UNITED METH 5125 SHATTALON DRIVE	207	12	32	72	21D	A 1
NEW LIFE WESLEYAN CHURCH 2017 W CLEMMONSVILLE RD	602	05	32	93	21B	B 2
NORTH HILLS ELEMENTARY 340 ALSPAUGH DRIVE	206	12	32	72	21D	A 1
NORTHWEST MIDDLE SCHOOL 5501 MURRAY ROAD	032	05	31	94	21C	B 2
OAK SUMMIT UNITED METH 732 OAK SUMMIT ROAD	081	12	32	71	21D	A 1
OLD RICHMOND ELEMENTARY 6315 TOBACCOVILLE ROAD	091	05	31	92	21A	B 2
OLDTOWN BAPTIST CHURCH 4386 SHATTALON DRIVE	908	05	32	94	21C	B 2
OLD TOWN PRESBYTERIAN 4637 TIM ROAD	904	12	32	72	21B	A 1
OLD TOWN RECREATION CTR 4550 SHATTALON DRIVE	909	05	32	94	21C	B 2
PAISLEY MIDDLE SCHOOL 1400 GRANT AVENUE	205	12	32	72	21D	A 1
PARKLAND HIGH SCHOOL 1600 BREWER ROAD	605	12	32	72	21B	A 2
PARKWAY UNITED CHURCH 2151 SILAS CREEK PARKWAY	704	05	32	72	21A	B 2
PPAFFTOWN CHRISTIAN CHURCH 3323 TRANSOU ROAD	132	05	31	94	21A	B 2
PHILO MIDDLE SCHOOL 410 HAVERHILL STREET	606	12	32	71 72	21B	B 1
PIEDMONT BAPTIST COLLEGE ACADEMY AT BROAD STREET	601	12	32	72	21B	B 1
PINEY GROVE ELEMENTARY 1500 PINEY GROVE ROAD	066	05	31	66	21C	B 2
PINEY GROVE FIRE STATION 1109 PINEY GROVE ROAD	062	05	31	66	21C	B 2
POLO PARK RECREATION CTR 1850 POLO ROAD	801	05	31	94	21C	B 2
PRaise ASSEMBLY OF GOD 2001 E 25TH STREET	303	12	32	72	21D	A 1
PROVIDENCE MORAVIAN CHURCH 929 OLD HOLLOW ROAD	111	05	31	94	21C	B 2
REYNOLDS HIGH GIRLS GYM 1404 NORTHWEST BLVD	901	05	31 32	93 72	21B	B 2
ROBINWOOD AT KVILLE 230 HOPKINS ROAD	065	05	31	94	21C	B 2
RURAL HALL ELEMENTARY 275 COLLEGE STREET	031	05	31	71 94	21C	B 2
SEDGE GARDEN ELEMENTARY 475 SEDGE GARDEN ROAD	013	05	31	94	21C	B 2
SEDGE GARDEN REC CTR 401 ROBBINS ROAD	507	12	32	71	21B	A 2
SHERWOOD FOREST ELEM SCH 1055 YORKSHIRE ROAD	804	05	31	93	21C	B 2
SHILOH LUTHERAN CHURCH 703 LEWISVILLE-VIENNA RD	133	05	31	92	21A	B 2
SIMS RECREATION CENTER 1201 ALDER STREET	405	12	32	71	21D	A 1
SOUTH FORK ELEMENTARY 4332 COUNTRY CLUB ROAD	706	05	32	93	21A	B 2
SOUTHEAST MIDDLE SCHOOL 1200 OLD SALEM RD	015	05	31	94	21C	B 2
SOUTHWEST ELEMENTARY 1631 SOUTHWEST DRIVE	072	05	31	92	21A	B 2
ST ANDREWS PRESBYTERIAN 357 OLD HOLLOW ROAD	033	12	32	71 94	21C	B 2
ST ANDREWS METHODIST 1840 BUTLER STREET	501	12	32	71	21B	A 1
ST ANNES EPISCOPAL 2690 FAIRLAWN DRIVE	907	05	31	94	21B	B 2
SUMMIT SCHOOL 2100 REYNOLDA ROAD	802	05	31	94	21C	B 2
TRINITY MORAVIAN CHURCH 220 E SPRAGUE STREET	503	12	32	71	21B	A 1
TRINITY UNITED METHODIST 3819 COUNTRY CLUB ROAD	806	05	31	93	21A	B 2
UNION CROSS ELEMENTARY 4300 HIGH POINT ROAD	012	05	31	94	21C	B 2
UNITY MORAVIAN CHURCH 8300 CONCORD CHURCH ROAD	073	05	31	92	21A	B 2
VFW POST 9010 4615 HAMPTON ROAD	053	05	31	93	21A	B 2
VIENNA ELEMENTARY SCHOOL 1975 CHICKASHA ROAD	131	05	31	92	21A	B 2
WALKERTOWN LIBRARY 2989 MAIN STREET	112	05	31	94	21C	B 2
WARD ELEMENTARY SCHOOL 3775 FRATERNITY CHURCH RD	709	05	31	93	21A	B 2
WESTVIEW BAPTIST CHURCH 1700 EBERT STREET	607	05	31	72	21B	B 2
WHITAKER ELEMENTARY 2600 BUENA VISTA ROAD	803	05	31	93	21C	B 2
WINSTON LAKE FAMILY/MCA 901 WATERWORKS ROAD	401	12	32	71	21D	A 1
WSFC SCHOOLS ADMINISTRATION 1605 MILLER STREET	604	12	32	72	21B	B 1